

TRUE LIGHT MIDDLE SCHOOL OF HONG KONG
KLA COMPENDIUM | VOL. 2

HIDDEN GEMS

EXPLORE YOUR WORLD

TOP

14 BEST TOURIST
DESTINATIONS

Want to visit interesting places?
Keep reading...

FOREWORD

Following last year's *Rebel Girls* audiobook, we present to you the second installment of our annual KLA Compendium. This year, *Hidden Gems* takes you across the globe, introducing a collection of travel destinations worth visiting.

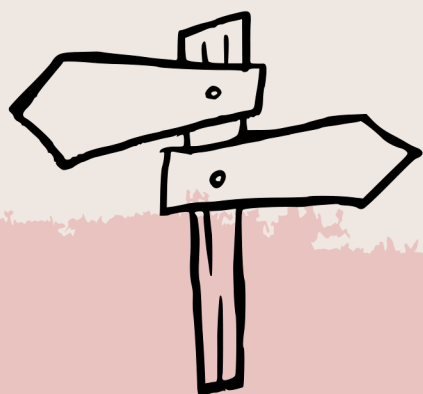
Within these pages, you will find recommendations that go beyond conventional travel guides. Each site has been carefully selected by teachers for its connection to their EMI subject, offering a unique opportunity for students to deepen their understanding of not only the subject they study in school but also the world and its many different wonders. All 14 recommendations in the book have been brought to life by our incredibly talented girls, who act as tour guides taking us on a virtual journey to the destination with their creative videos.

We would like to thank all EMI subject departments once again for their invaluable contributions towards the publication of this year's compendium. After an extended period of unprecedented lockdowns, it is high time we regained our wanderlust and explored the world around us. We hope *Hidden Gems* can guide you towards brand-new experiences and profound learning around the world.

TRAVELLING SOMEWHERE...?



Aesthetic Development - Drama		4
Biology		5
Chemistry		6
Citizenship and Social Development		7
Economics		8
Geography		9
History		10
Home Economics		11
Mathematics		12
Music		13
Physical Education		14
Physics		15
Science (S1-S2)		16
Visual Arts		17



Explore

THE IMPRESSION LIJIANG THEATRE

 Lijiang, China

Impression Lijiang Theatre, accommodating more than 2,800 people, is the world's highest 3,500m open-air theatre. With the Jade Dragon Snow Mountain as the backdrop, and the 12-metre high red sandstone stage, it provides a natural setting for the show *Impression Lijiang*.

What to see or do

Do you like horses? Songs? Colourful costumes?

Impression Lijiang: Watch the renowned cultural show "Impression Lijiang" - a breathtaking and dramatic fusion of music, songs, choreography, costumes, galloping horses, designed by the international acclaimed director Zhang Yimou. The show demonstrates the traditions and lifestyles of the Naxi, Yi and Bai peoples of the area.

Jade Dragon Snow Mountain: That majestic white mountain over there? That's the Jade Dragon Snow Mountain, which serves as a backdrop for the cultural show.

12-metre high red sandstone stage: Watch the show performed on the natural setting, which also serves as a backdrop for the show.



Listen to your tour guide Jaslene Li (3B) now!

Explore PERTH ZOO

 Perth, Australia

Just five minutes from the city, discover lush gardens while surrounded by the most amazing animals on the planet. The animals and plants at Perth Zoo are from all corners of the globe, with many indigenous ones that only live in Australia, like dingos and wombats.

What to see or do

You're an animal lover, right? Ever wondered what the daily operations of a zoo are like?

Different animals: Observe iconic animals like kangaroos, koalas and platypuses, as well as exotic reptiles and majestic big cats.

Interactive exhibits: Learn about animal adaptations, behaviors, and the importance of biodiversity.

Educational talks and presentations: Learn about conservation efforts and the role of zoos in preserving endangered species.

Behind-the-scenes tours: Participate in tours that show you more about animal care and wildlife management that you normally don't see.



A mammal that lays an egg!

Three weeks after the female lays a tiny soft egg in a pouch on her abdomen. The pouch is really only a temporary fold of skin that contracts abdominal muscles.

The puggle is left in a burrow once it begins to develop spines at 7 weeks of age. The mother stays away for up to 6 days at a time before returning to suckle her young.

A young echidna emerges from its burrow after 7 months and teaches itself how to forage for food.

At 5 weeks of age the puggle still doesn't have spines and remains in the pouch.

A 1.3 cm long belly echidna, or puggle, hatches after 10 days. It suckles milk from the mother's 'pouches', an echidna version of teats.



Listen to your tour guide Kate Leung (3B) now!



Explore CERN

THE EUROPEAN ORGANIZATION FOR
NUCLEAR RESEARCH (CONSEIL EUROPÉEN
POUR LA RECHERCHE NUCLÉAIRE)

 **Geneva, Switzerland**

CERN is the world's largest particle physics laboratory, renowned for its groundbreaking research and cutting-edge experiments. It is home to the famous Large Hadron Collider (LHC), a particle accelerator that allows scientists to study the fundamental particles and forces that make up our universe.

What to see or do

Why do we need such a big, big, big structure? To learn about our big, big, big, big universe of course!

Large Hadron Collider (LHC): Tour the world's most powerful particle accelerator and witness how big and complex it is. Find out more about the experiments conducted at the LHC and learn about the fundamental particles that make up our universe, like quarks, muons, and neutrinos.

Interactive workshops: Join workshops that delve into various scientific concepts, such as those in particle physics, astrophysics, and quantum mechanics.

Experiment observations: Witness ongoing experiments and learn about the scientific methods employed to seek answers to fundamental questions about the universe.



Listen to your tour guide Corrine Leung (3C) now!

Explore

NATIONAL MUSEUM OF CHINA

 Beijing, China

The National Museum of China (NMC) is China's supreme establishment that collects, researches, displays and interprets China's fine traditional culture, revolutionary culture and advanced socialist culture. NMC is the top palace of history and art and a cultural parlor for China.

What to see or do

What's 5000 years of history housed under one roof? Well, it's the National Museum of China!

More than 1.4 million items collected: Be in awe of NMC's massive collection, which covers ancient and modern artifacts, rare and antiquarian books, and works of art, including:

- 815,000 pieces/sets of ancient cultural heritage
- 340,000 pieces/sets of modern cultural heritage
- more than 240,000 rare and antiquarian books
- nearly 6,000 Grade One cultural relics

Permanent exhibitions: Visit NMC's permanent exhibitions, which include "Ancient China", "The Road of Rejuvenation" and "The Road of Rejuvenation: New Era". The exhibitions combine to form a multi-dimensional exhibition system.

Other exhibitions: Visit other temporary exhibitions which include those curated by the Museum itself and the exchange exhibitions from outside.



Listen to your tour guide Anna Wong (2C) now!

Explore

BANK OF ENGLAND MUSEUM

London, UK

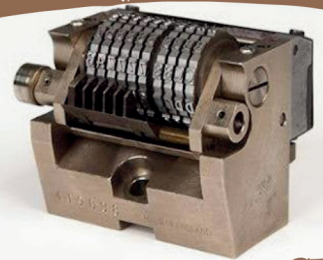
The Bank of England Museum, located within the Bank of England in the City of London, is home to a collection of diverse items relating to the history of the Bank and the UK economy from the Bank's foundation in 1694 to the present day. The museum is open to the public, free of charge.

What to see or do

What is it like to hold something so expensive in your own hands?

Permanent displays: Observe and even interact with the impressive items on display in the museum. These include:

- a genuine bar of gold (99.79% pure gold), which you have the opportunity to actually hold
- the Banknote Gallery, comprising examples of every note the Bank has ever made; printing plates; material samples; examples of forgeries and counterfeits (*fun fact: notes with King Charles do not come out until June, so they only have notes featuring the late Queen*)
- the History of the architecture of the Bank
- the Future of Money – from digital currencies to the importance of cash in our everyday lives



Listen to your tour guide Emily Wan (4C) now!



Explore

MT. UNZEN DISASTER MEMORIAL HALL

(GAMADASU DOME)

Nagasaki, Japan

The Mt. Unzen Disaster Memorial Hall, also known as Gamadasu Dome, was established to commemorate the tragic volcanic eruption of Mt. Unzen in 1991, which resulted in the loss of many lives and widespread destruction. This is the only museum in the world where one can experience a simulated volcanic eruption, and learn about the damage caused by the disaster and more importantly, how to prepare oneself in case of a disaster.

What to see or do

What is a place like before and after a natural disaster?

Model of Pre-Eruption Town: See the reconstructed model of the town immediately after the eruption, which offers a visual representation of the magnitude and devastation caused by the Heisei eruption.

Shimabara Taihen Theatre: Watch a Kabuki-style picture-card, which tells the story about the "Shimabara Taihen (Disaster)."

The Great Heisei Eruption Cinema: Experience the disastrous pyroclastic flow and landslide through three immersive videos.

Lava Garden: See actual lava rocks that were carried down from Mt. Unzen by the pyroclastic flows and landslides.



Listen to your tour guide Ashley Tai (118) now!

Explore

ARCHAEOLOGICAL PARK OF POMPEII

 Pompeii, Italy

The Archaeological Park of Pompeii is a UNESCO World Heritage site located near Naples, Italy. It preserves the ancient Roman city of Pompeii, which was buried under volcanic ash and debris during the eruption of Mount Vesuvius in 79 AD. The park covers an area of approximately 170 acres and includes excavated ruins of residential houses, public buildings, streets, and even the preserved bodies of some of the victims of the eruption.

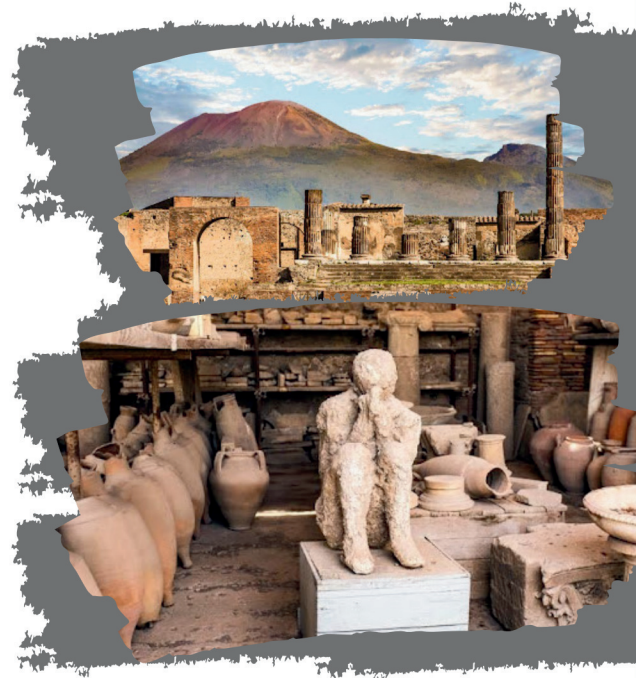
What to see or do

*Eh, eheu, eheu~ Grey clouds roll over the hills
bringing darkness from above~*

Ever heard of the song Pompeii by the band Bastille? Do you know about the true events that inspired the song?

A glimpse into the past: Grasp the unique opportunity to step back in time and experience the ancient Roman world. Explore the ancient city of Pompeii and witness the impressive ruins that have survived for centuries. Highlights include:

- the Forum, the centre of civic life
- the amphitheater
- Mount Vesuvius
- the House of the Vettii, known for its well-preserved frescoes



Listen to your tour guide Karina Tsang (3C) now!



Explore

MUSEUM OF FOOD AND DRINK



New York City, USA

The museum of food and drink contains videos, story-telling and learning programmes about food culture. In the museum, you can have information about food. It can let eaters make better food choices for themselves, their community, and the environment. It will arouse your curiosity about where your food comes from so as to lead curiosity about the world around you.

What to see or do

Hungry?

Exhibitions: The museum's current exhibition is called *Flavor*. In the exhibition, explore what really happens in our heads when we experience the flavors of food; discover the ways flavor companies engineer and design the flavors that we eat almost every day. *Flavor* opens through the end of 2024, so what are you waiting for?

History and Artifacts: Experience culinary traditions, innovations, and cultural significance of different cuisines through the collection of historical artifacts related to food and drink.

Culinary Studio: Observe professional chefs as they prepare dishes and learn about different culinary techniques and traditions in cooking demonstrations with tasting sessions. Yum!



Listen to your tour guide Janice Leung (3B) now!

Explore

MATHEMATIKUM



Gießen, Germany

Mathematikum is an extraordinary museum that offers an array of captivating activities and fascinating exhibits for secondary school students with a keen interest in mathematics and science. Here, young minds can delve into the world of numbers, equations, and spatial concepts through interactive displays and hands-on experiments.

What to see or do

Puzzle solvers and math lovers unite!

Puzzle Zone: Embark on a journey of problem-solving and spatial reasoning. Engage with intriguing puzzles, from tangrams and jigsaw puzzles to mechanical puzzles.

Leonardo Bridge exhibit: See this exhibit inside the Puzzle Zone, which pays homage to the legendary artist and inventor Leonardo da Vinci. The exhibit showcases the principles of engineering and mathematics as you observe the bridge's construction and learn about the mathematical concepts that make it possible.

Hands-on Exhibition: Get your hands on their interactive exhibits. Explore mind-bending optical illusions. Observe the properties of symmetry and witness the mesmerizing mathematical art.



Listen to your tour guide Cherine yip (4C) now!



Explore

WANFU STAGE

 Foshan, China

Wanfu Stage is a historic theater located within the Foshan Ancestral Temple in China. Built in 1658, it has played a significant role in the development of Cantonese opera. The stage is known for its exquisite architectural design, featuring a hipped roof and decorative screens. Originally dedicated to performances for the gods, Wanfu Stage later became a platform for Cantonese opera troupes. It has witnessed the rise of renowned Cantonese opera performers and has become a symbol of Foshan's cultural heritage.

What to see or do

Think Chinese Opera is only for old people? Think again!

Wanfu Stage: Look at the grandiose Wanfu stage, where opera troupes competed to perform. Here are some facts about the stage:

- constructed in 1658 and originally called Huafeng Stage
- divided into a front stage and a backstage by decorative screens with abundant gilded wood carvings
- the front stage has three open sides, with the central bay used for performances and the adjacent bays for the orchestra

Opera performances: Watch some opera in Foshan – the birthplace of Cantonese opera. See plays like “Joint Investiture of a Prime Minister by Six Warlords” or other performances.



Listen to your tour guide Angie Lam (3C) now!



Explore

NATIONAL FOOTBALL MUSEUM



Manchester, UK

The National Football Museum in Manchester is a world-class institution dedicated to the history, culture, and heritage of football (soccer). It houses one of the largest collections of football memorabilia and artifacts, showcasing the evolution of the beautiful game.

What to see or do

Ever imagined scoring a World Cup goal? Want to know more about the legends of the game? This is the museum for you!

Interactive displays, multimedia presentations, and immersive exhibits: Relive iconic moments and legendary matches through video footage and audio recordings. Play penalty shootouts, virtual football matches, and quizzes to test your knowledge about football.

Collection of football-related items: Discover the origins of the football, its development over the years, and its global impact. Admire historical jerseys, footballs, and trophies of famous players.

Hall of Fame: Explore the profiles and achievements of football's greatest players, managers, and referees. Notable names inducted in the Hall of Fame include former Arsenal player Patrick Vieira and former manager Arsene Wenger.



Listen to your tour guide Ella Monahan (1P) now!

Explore

DEUTSCHES MUSEUM

 Munich, Germany

The Deutsches Museum is one of the largest science and technology museums in the world. It contains over 30,000 exhibits, with major sections devoted to physics, astronomy and related fields. Exhibits include working models that explain scientific principles and devices that demonstrate the history and applications of physics.

What to see or do

A fan of German-born Albert Einstein? How can you not fall in love with physics in the museum?

Interactive galleries: Check out the different things that showcase principles of mechanics, optics, electricity and more:

- awesome large-scale physics demonstrations at the spectacular hydraulics and aerodynamics shows
- engaging exhibits like the ball run that demonstrates principles of motion, force and energy
- the history of science galleries where you can discover the development of groundbreaking physics concepts
- iconic scientific instruments used by Newton, Galileo and other famous physicists



Listen to your tour guide Jonita Mak (4C) now!

Explore

EXPLORATORIUM



San Francisco, USA

The Exploratorium is an interactive science museum in San Francisco, known for its hands-on exhibits and engaging educational programs. Visitors can explore over 600 exhibits, participate in workshops, and experience a unique approach to science learning that inspires curiosity and discovery.

What to see or do

Big Hero 6 and the lovable Baymax are not the only things that blend science with San Francisco!

Exhibitions: Engage with over 600 interactive exhibits spanning various scientific disciplines at the Exploratorium. Discover outdoor exhibits that blend art and science. Explore temporary exhibitions that delve into specific scientific themes.

Hands-on experiences: Participate in hands-on experiments and demonstrations led by scientists and educators. Attend workshops and presentations on diverse scientific topics.

Tactile Dome: Explore the Tactile Dome, a unique sensory experience in complete darkness.

San Francisco Bay: Enjoy stunning views of the bay from the museum's location on Pier 15.



Listen to your tour guide Athena Ip (3C) now!

Explore

M+



West Kowloon, Hong Kong

M+ is one of the largest museums of modern and contemporary visual culture in the world. M+ was officially opened in November 2021. The M+ Collections are from Hong Kong, as well as other locations in Asia and around the world. They encompass works of various visual art forms, such as visual art, design and architecture and moving image.

What to see or do

Looking for something a little closer to home? Look no further!

The exhibition space: Be at the centre of the exhibition space, which takes up 17,000 square metres. From there, visit galleries mostly located on the large podium level on the second floor.

The M+ Collection: Admire artworks for the Collection from artists, designers and architects all over the world in 2012. See collected cross-boundaries and cross-countries visual culture pieces from the 20th and 21st centuries, including works of design, architecture, moving image, visual art, Hong Kong visual culture, and more.

Interactive experiences: See special films that match the themes of ongoing exhibitions at M+. Visit M+ Playscape located in the North Roof Garden.



Listen to your tour guide Hailey Lu (4C) now!

TRIVIA TIME!

Blacken the circle to indicate your answer to the question in the video.

EMI Subject	Tourist Attraction	Your Answer
Aesthetic Development - Drama	The Impression Lijiang Theatre	(A) (B) (C) (D)
Biology	Perth Zoo	(A) (B) (C) (D)
Chemistry	CERN	(A) (B) (C) (D)
Citizenship and Social Development	National Museum of China	(A) (B) (C) (D)
Economics	Bank of England Museum	(A) (B) (C) (D)
Geography	Mt. Unzen Disaster Memorial Hall	(A) (B) (C) (D)
History	Archaeological Park of Pompeii	(A) (B) (C) (D)
Home Economics	Museum of Food and Drink	(A) (B) (C) (D)
Mathematics	Mathematikum	(A) (B) (C) (D)
Music	Wanfu Stage	(A) (B) (C) (D)
Physical Education	National Football Museum	(A) (B) (C) (D)
Physics	Deutsches Museum	(A) (B) (C) (D)
Science (S1-S2)	Exploratorium	(A) (B) (C) (D)
Visual Arts	M+	(A) (B) (C) (D)

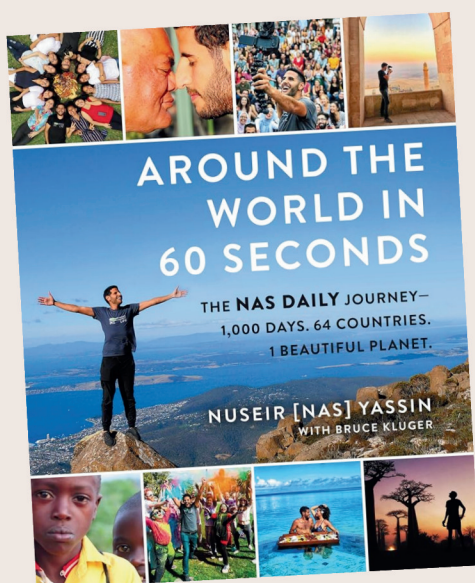


TRAVEL BOOKS

"To travel far, there is no better ship than a book."

— *Emily Dickinson*

Here are some books about travelling you can find in the library!



Around the World in 60 Seconds: The Nas Daily Journey, based on the popular Nas Daily video series, takes you on a 1,000-day journey to various countries, showcasing the beauty and diversity of our planet. With captivating stories and stunning photographs, it offers a unique perspective on humanity and invites readers to see the world in a new light.

A fan of K-Pop? Read this book now! ***Hello, South Korea: Meet the Country Behind Hallyu*** offers a comprehensive introduction to the history, culture, and people of South Korea. Discover the fascinating realm of Hallyu, from K-pop sensations to popular TV shows like Squid Game. With its engaging design, including vibrant visuals and high-quality images, this book brings South Korea to life. Get ready to get swept off your feet by the Korean wave!



THE END OF A JOURNEY MEANS
THE START OF ANOTHER ONE.

What are you waiting for?
Embark on your own journey now!



In collaboration with True Light Library